



# Vmax 153P High Efficiency Gas-Fired condensing Boiler

**SUBMITTAL SHEET**  
 Section 1 – General Specifications  
 Section 2 – Product Dimensions  
 Section 3 – Field Wiring

Project Name: \_\_\_\_\_ Date: \_\_\_\_\_  
 Location: \_\_\_\_\_  
 Engineer: \_\_\_\_\_  
 Contractor: \_\_\_\_\_ Rep: \_\_\_\_\_

## 1 – GENERAL SPECIFICATIONS

### Product Features:

- ✓ Certified to ANSI Z21.13 / CSA 4.9 Gas-fired Boiler Standard
- ✓ SA240-S43932 Stainless Steel Heat Exchanger
- ✓ Vertical Firetube Boiler
- ✓ ASME "H" stamped boiler, designed and constructed in compliance with the ASME Boiler and Pressure Vessel Code Section IV
- ✓ Maximum operating pressure 30 psi
- ✓ Modulating burner, 10:1 turndown ratio
- ✓ Direct Spark Ignition
- ✓ Built-in 16 gallon indirect water heater (w/ tank sensor)
- ✓ Built-in Primary Loop
- ✓ Built-in 3 speed circulator
- ✓ Built-in 3-way diverter valve
- ✓ Water pressure sensor
- ✓ 120 VAC outlet for condensate pump
- ✓ Wall (standard) or floor mounting (w/ opt. kit, NTI part # 84624)
- ✓ Zero clearance to combustibles (clearances required for service)
- ✓ Field conversion from Natural Gas (factory) to Propane
- ✓ Optional Sidewall vent kits

### Factory Supplied Items

- ✓ 10K Outdoor sensor
- ✓ 30 PSI ASME Pressure Relief Valve
- ✓ 150 PSI ASME Temperature/Pressure Relief Valve
- ✓ Pressure/Temperature Gauge
- ✓ Condensate Trap

### Control Features

- ✓ Integral microprocessor safety control
- ✓ Domestic Hot Water Priority timer
- ✓ Outdoor Reset
- ✓ Warm weather shut down
- ✓ Freeze protection
- ✓ Cascade up to 16 Vmax boilers
- ✓ 3 circulator outputs
- ✓ Outdoor reset temperature boost
- ✓ Service reminder
- ✓ Adjustable pump post purge
- ✓ Run time accumulation
- ✓ Night setback option
- ✓ Lockout and error history

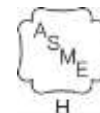
### Model Specifications

Boiler Water Connections NPT, in.	DHW Connections NPT, in.	Gas Connection NPT, in.	Vent/Air-Inlet Connection, in.	Vent/ Air-Inlet Max. Length, Ft.	Approx. Wt. w/Water, lb.
1 (Male)	¾ (Male)	½ (Female)	3	150	300

### Performance Specifications

Input Modulation, MBH	DOE Heating Capacity, MBH	NET I=B=R Rating, MBH	AFUE, %	1 <sup>st</sup> Hour Rating, GPH	Continuous Rating, GPH	DHW Volume, US Gal.
15.4 - 154	141	122	95	300*	287*	16

\*DHW performance values are listed in US gallons, and are based on average water temperature of 108°F at mixing valve outlet and 50°F inlet.



NY Thermal Inc.

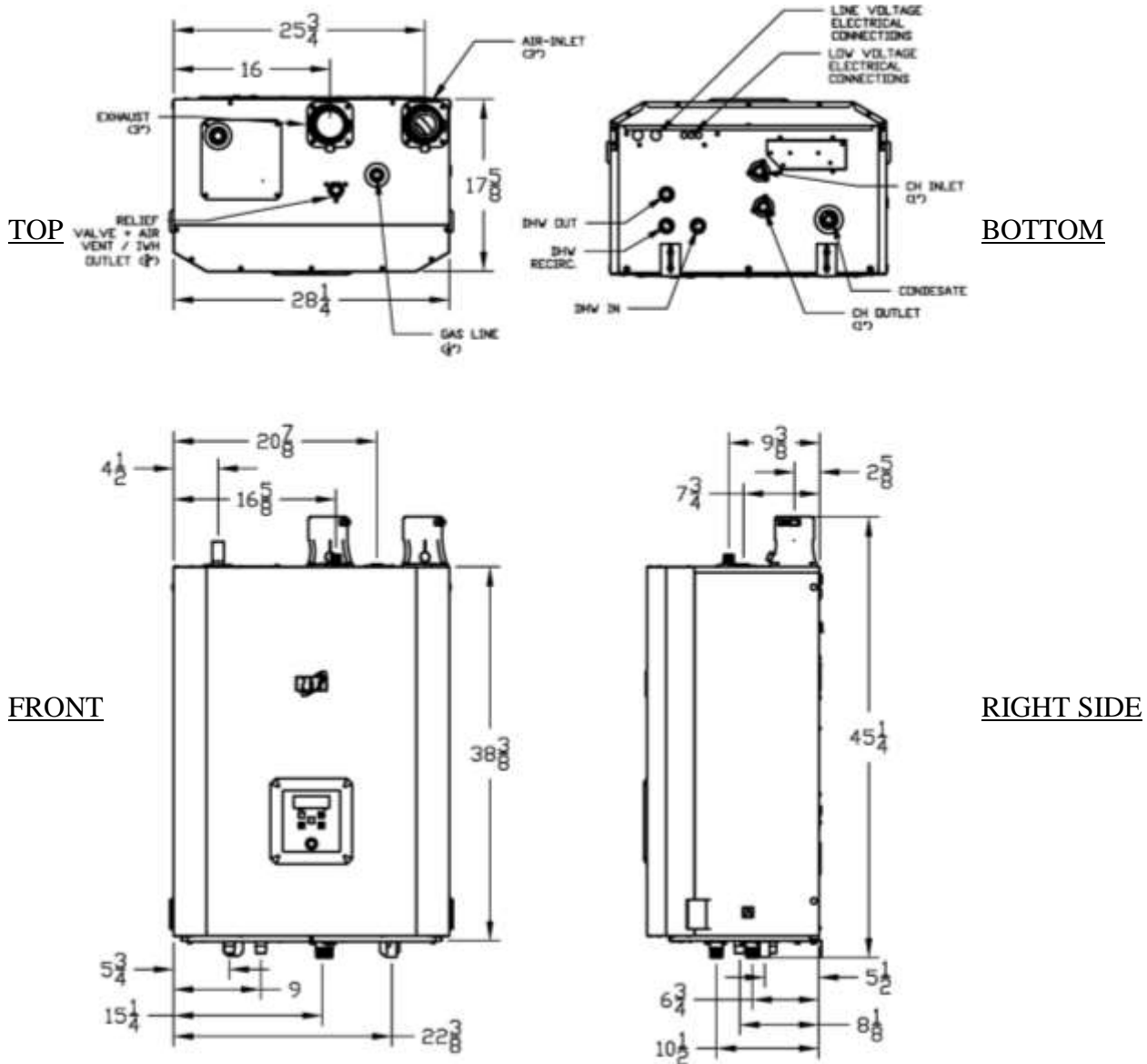
NY Thermal Inc. 30 Stonegate Drive, Saint John, NB E2H 0A4 Canada

Technical Service: 1-800-688-2575 Fax: 1-506-432-1135 Web: <http://www.ntiboilers.com>

NY Thermal Inc. reserves the right to change these specifications without notice

2016-06-23  
Rev. 0

## 2 – PRODUCT DIMENSIONS [in.]



## RECOMMENDED CLEARANCES - in. [mm]

Front	Top	Sides	Back	Bottom	Flue Pipe
36 [914]	24 [610]	12 [305]	0	24 [610]	1 [25]



NY Thermal Inc.

NY Thermal Inc. 30 Stonegate Drive, Saint John, NB E2H 0A4 Canada

Technical Service: 1-800-688-2575 Fax: 1-506-432-1135 Web: <http://www.ntiboilers.com>

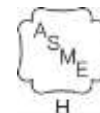
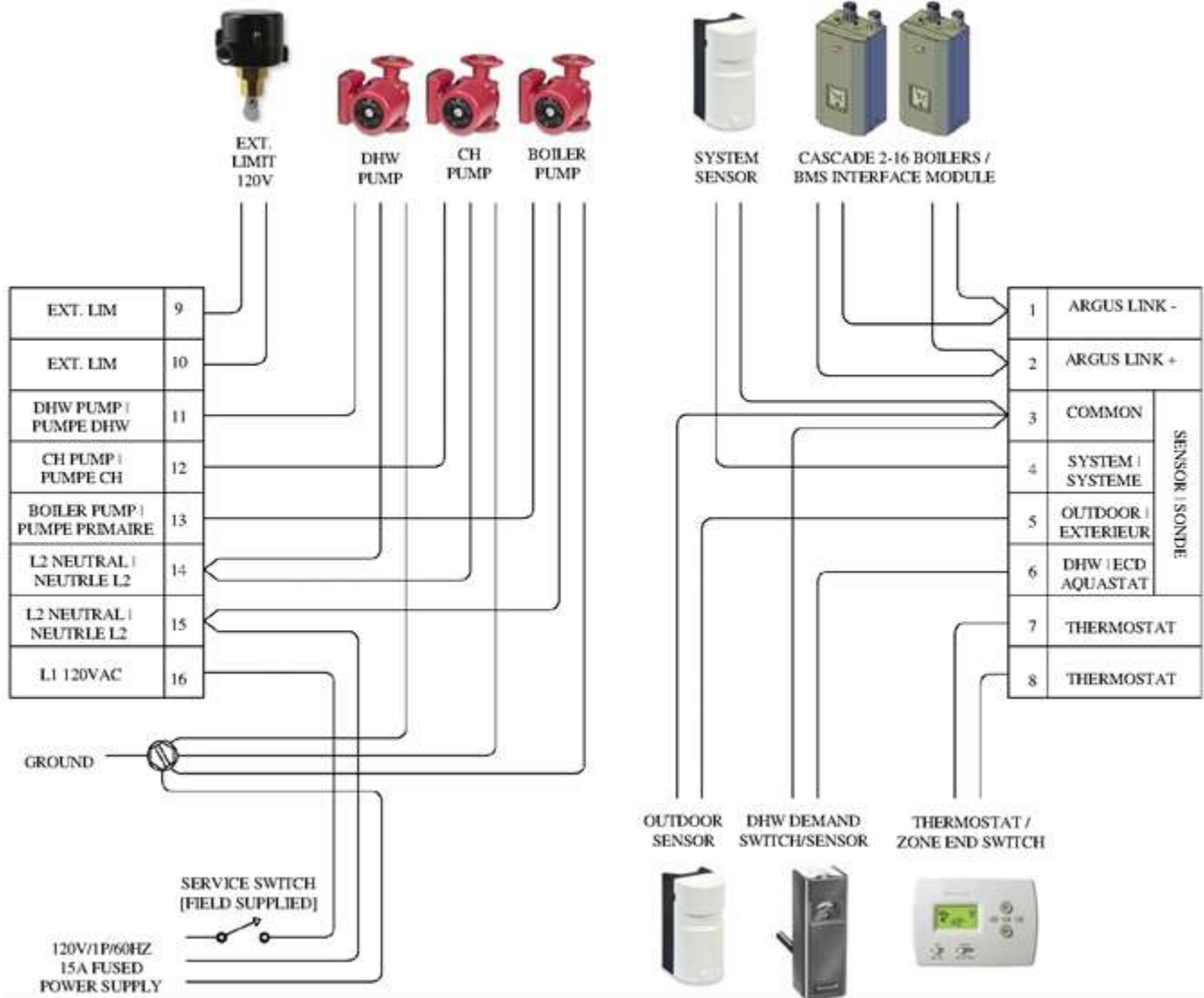
NY Thermal Inc. reserves the right to change these specifications without notice



# Vmax 153P High Efficiency Gas-Fired condensing Boiler

**SUBMITTAL SHEET**  
 Section 1 – General Specifications  
 Section 2 – Product Dimensions  
 Section 3 – Field Wiring

## 3 – FIELD WIRING



2016-06-23  
Rev. 0

NY Thermal Inc.  
 NY Thermal Inc. 30 Stonegate Drive, Saint John, NB E2H 0A4 Canada  
 Technical Service: 1-800-688-2575 Fax: 1-506-432-1135 Web: <http://www.ntiboilers.com>  
 NY Thermal Inc. reserves the right to change these specifications without notice