

Project Name: _____ Date: _____
 Location: _____
 Engineer: _____
 Contractor: _____ Rep: _____

1 – GENERAL SPECIFICATIONS

Product Features:

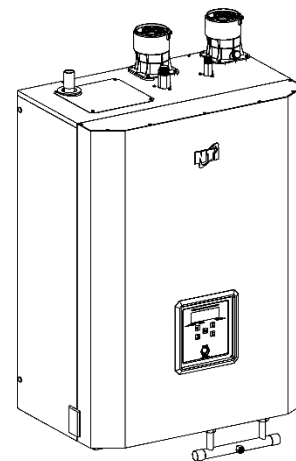
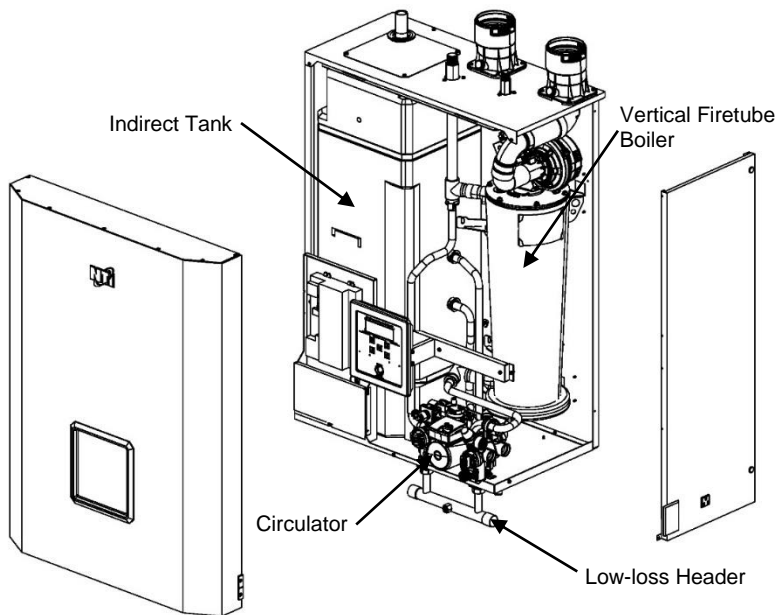
- ◊ VM110P SA240-S43932 Stainless Steel Heat Exchanger
- ◊ ASME "H" stamped boiler, designed and constructed in compliance with the ASME Boiler and Pressure Vessel Code Section IV
- ◊ Maximum operating pressure 30 psi [206.8 kPa]
- ◊ Modulating burner, 6.5 turndown ratio
- ◊ Direct Spark Ignition
- ◊ Built-in Tank Sensor
- ◊ Wall (standard) or floor mounting (w/ opt. kit, NTI part # 84624)
- ◊ Zero clearance to combustibles
- ◊ 110 MBH [110,000 BTU]
- ◊ Field conversion from Natural Gas (factory) to Propane
- ◊ Optional Sidewall vent kits
- ◊ Vents with PVC/CPVC/PP/SS
- ◊ Built-in diverter valve
- ◊ Built-in 3 speed circulator
- ◊ Built-in 16 gallon indirect water heater
- ◊ 120VAC outlet for condensate pump
- ◊ On/Off switch

Factory Supplied Items

- ◊ 10K thermistor outdoor sensor
- ◊ 150PSI [1034 kPa] ASME Temperature/Pressure Relief Valve
- ◊ 30PSI [206.8 kPa] ASME Relief Valve
- ◊ 60PSI [413.7 kPa] Pressure Gauge
- ◊ Low-loss Header
- ◊ Condensate Trap

Control Features

- ◊ Integral microprocessor safety control
- ◊ Domestic Hot Water Priority
- ◊ Outdoor Reset
- ◊ Warm weather shut down
- ◊ Freeze protection
- ◊ Cascade up to 16 VM110T series boilers
- ◊ 3 Circulator outputs
- ◊ Outdoor reset temperature boost
- ◊ Service reminder
- ◊ Adjustable pump post purge
- ◊ Run time accumulation
- ◊ Night setback option
- ◊ Lockout and error history



Model Specifications

Model	Water Conn. NPT, in.	Gas Connection NPT, in.	Vent/Air-Intake Pipe Diameter in.	Vent/ Air-Inlet Max. Length, Ft.		Approx. Wt. w/Water lb.
				2 in. Venting	3 in. Venting	
VM110P	1 (Sweat)	½ (Male)	2 or 3	100	150	275
				100		

Heating Specifications

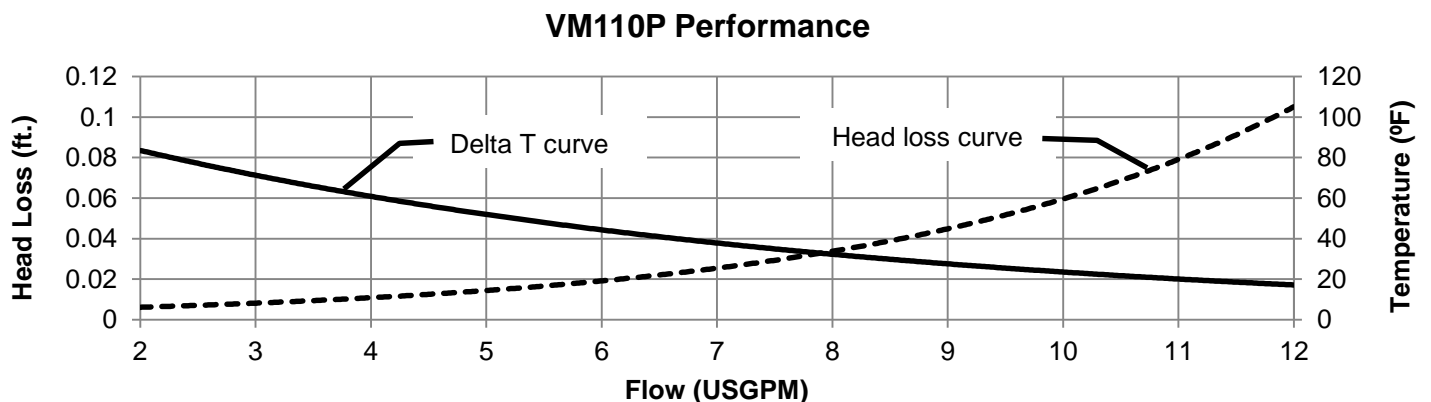
Model	Input		Heating Capacity BTU/hr	AFUE %	NET I=B=R Rating BTU/hr
	Min BTU/hr	Max BTU/hr			
VM110P	17,000	110,000	101,000	95	88,000

Domestic Hot Water Specifications

1 st Hour Rating* (GPH)	Continuous Rating* (GPH)	Domestic Inlet / Outlet	Domestic Capacity (Gal.)
218	205	¾"	16

*Domestic performance based on average water temperature of 108°F at mixing valve outlet and 50°F inlet

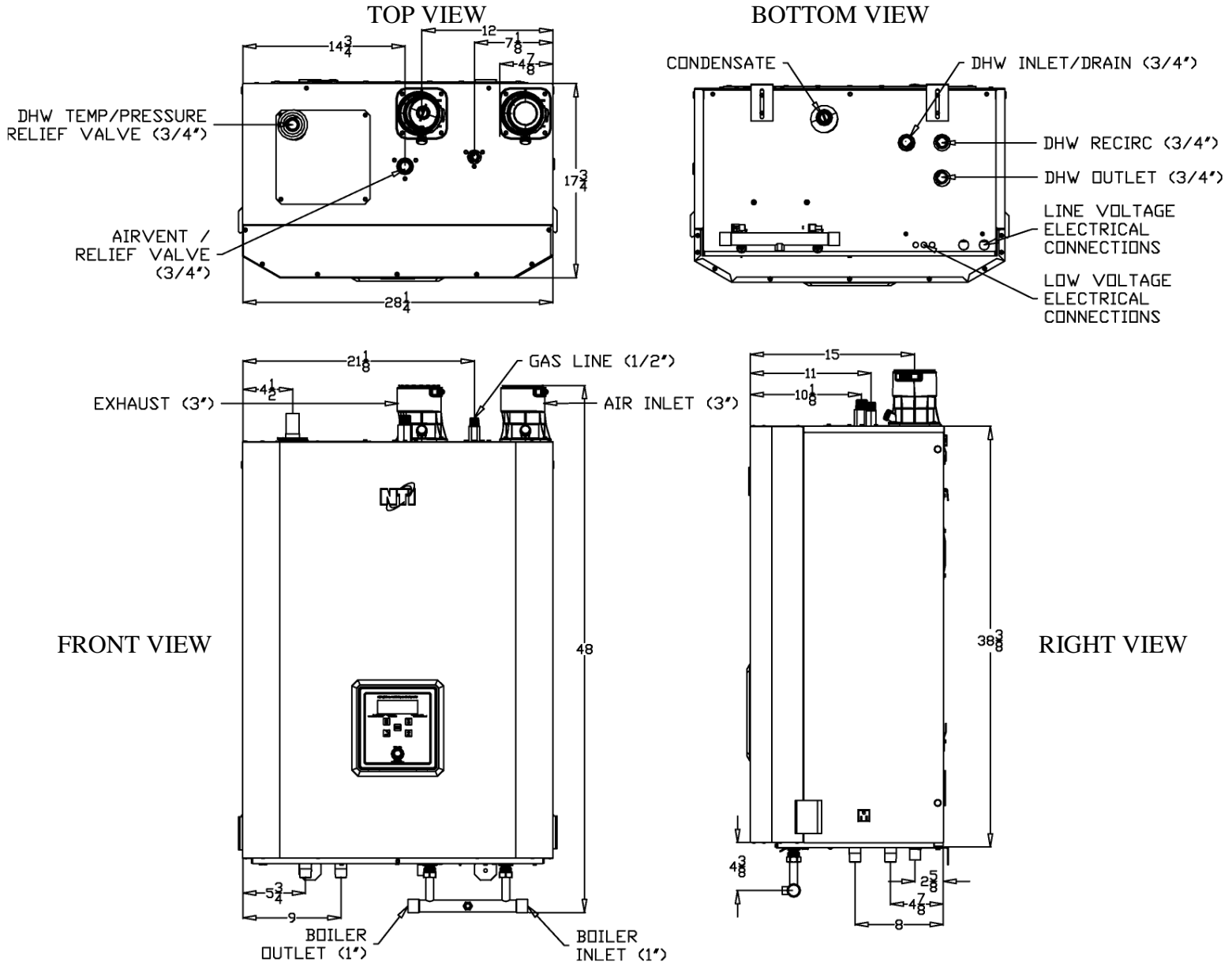
Performance Specifications



* Head loss values calculated for factory supplied Low-Loss Header.



2 – PRODUCT DIMENSIONS [IN.]



RECOMMENDED CLEARANCES [IN.]

Front	Top	Sides	Back	Bottom	Flue Pipe
36	24	12	0	24	1

3 -- FIELD WIRING

