

NY Thermal Inc.
 Tel: (506) 657-6000
 Toll Free: 1-800-688-2575
 Fax: 1-506-432-1135
 Web: www.nythermal.com
 Email: info@nythermal.com

84909, 84910, 84911, and 84912 Blower/Venturi Assembly, 532, 533, 534, and 535

Applicable Boiler Models

- Tx51
- Tx81
- Tx101
- Tx151
- Tx151C

Kit Contents

- 1 Blower/Venturi Assembly

Tools Required

- 8mm open ended wrench (5/16")
- Torx T25 Screwdriver
- Combustion analyzer

Replacement Instructions

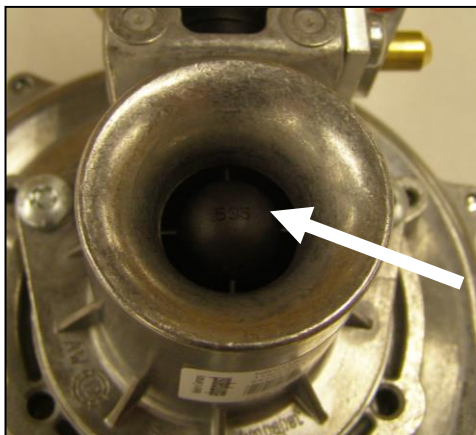
- 1) Turn off power and gas to the boiler.
- 2) Remove the screws securing the gas valve.
- 3) Remove wiring and air inlet pipe from combustion blower.
- 4) Loosen the blower mounting screws on the right side of the blower (do not remove)
- 5) Remove blower mounting screws on the left side of the blower
Note: if the blower gasket is also being replaced remove right hand screws completely

Use the table below to confirm that the blower matches the boiler model

- 6) Replace with new blower.
- 7) Re-assemble in the reverse order and perform a combustion test.



Gas Leakage – Failure to properly seal the blower to the burner door will result in gas leakage which can result in fire, explosion, serious injury or death.



Venturi Size by Model	
The venturi size is etched on the cone in the throat of the venturi:	
Model	Cone Size
Tx51	535 or 570
Tx81	534 or 571
Tx101	533 or 572
Tx151	None
Important: The venturi is glued to the blower. Blower and venturi form a complete unit and cannot be separated.	



Incorrect Part: Installing the incorrect blower may lead to the boiler over firing causing serious injury or death