

**NY Thermal Inc.**  
Tel: (506) 657-6000  
Toll Free: 1-800-688-2575  
Fax: 1-506-432-1135  
Web: www.nythermal.com  
Email: info@nythermal.com

# 84764-1 Display Assembly, Argus 210LB

## Applicable Boiler Models

- Tx51
- Tx81
- Tx101
- Tx151
- Tx151C

## Kit Contents

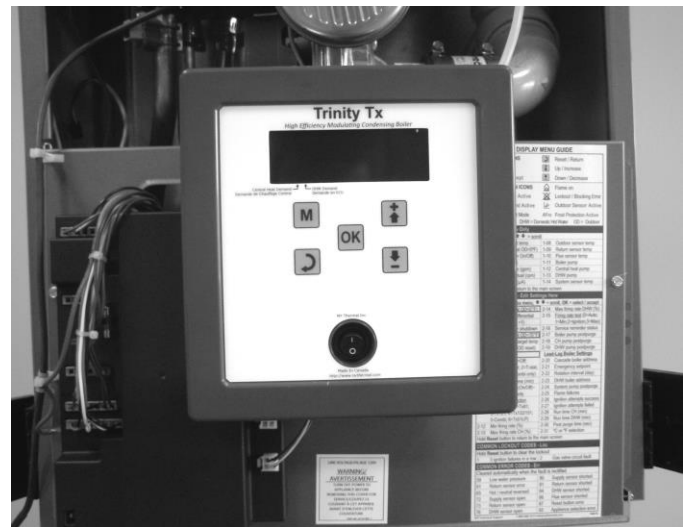
- 1 Display Assembly

## Tools Required

- 1/4" Nut Driver

## Replacement Instructions

- 1) Turn off power and gas to the boiler.
- 2) Disconnect display electrical connector and wires from the power switch.
- 3) Remove display assembly.
- 4) Transfer the metal display bracket from old display to the new one.
- 5) Attach new display assembly and re-attach wiring.



Turn off power at the source ie. circuit breaker or electrical service switch. Failure to do so will result in an electrical shock when removing wiring from the display service switch.