

**NY Thermal Inc.**  
 Tel: (506) 657-6000  
 Toll Free: 1-800-688-2575  
 Fax: 1-506-432-1135  
 Web: www.nythermal.com  
 Email: info@nythermal.com

# 84744 Combi Block ,Integrated Water Control, (59907208)

## Applicable Boiler Models

Tx151C, Tx200C

## Kit Contents

- 1 Combi Block

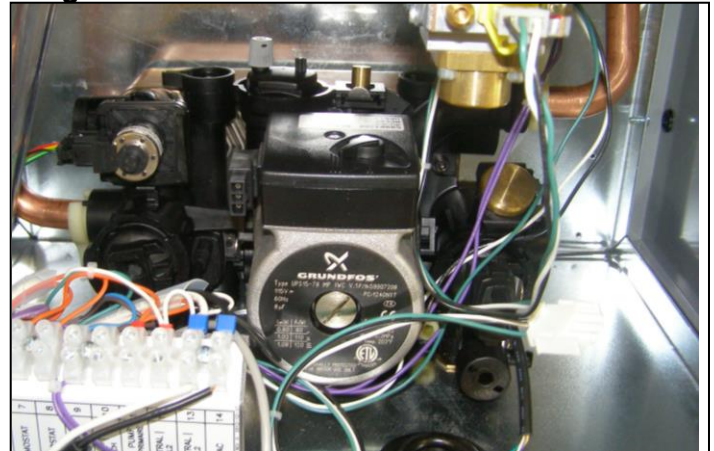
## Tools Required

- ¼” Nut Driver
- Pipe wrench
- T25 screw driver
- 6mm Allen wrench

## Replacement Instructions

- 1) Turn off power and gas to the boiler.
- 2) Drain boiler of water.
- 3) Drain the domestic water piping.
- 4) Remove retaining screw and swing the control panel out of the way.
- 5) Remove field installed wiring from the boiler terminal strip. **See Figure 1.**
- 6) Remove the two screws securing the wiring terminal strip to the bottom of the boiler and push the terminal strip out of the way. **See Figure 2.**
- 7) Remove all wires attached to the combi block
- 8) Unlock pipe retaining clips and pull both internal boiler pipes out of the combi block. **See Figures 3 and 4.**
- 9) Remove the 4 screws holding the combi block to the boiler base
- 10) Use an Allen wrench and turn the combi block retaining locks counter clockwise while holding the safety clips up, until they are unlocked. **See Figure 5.**
- 11) Remove combi block by pulling it straight up
- 12) Installation is the reverse of disassembly.
- 13) Follow DHW Filling Procedure. **Figure 6.**

Figure 1A



**CAUTION**

**Water Leakage** – Before reinstalling the combi block ensure that the o-ring seals on the brass fittings in the base of the boiler and on the boiler pipes are in place and in good condition. Failure to do so may cause water leakage causing property damage

**CAUTION**

**Air in Boiler** - Ensure the boiler is completely filled with water to a minimum pressure of 15psi, and that all the air is purged. Failure to do so could result in boiler a boiler malfunction causing property damage

Figure 1: Wiring terminal strip

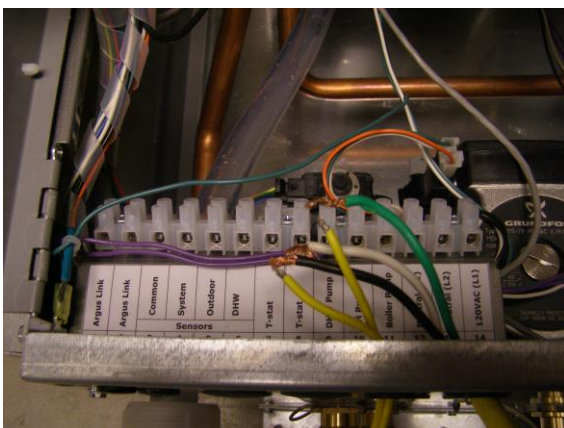
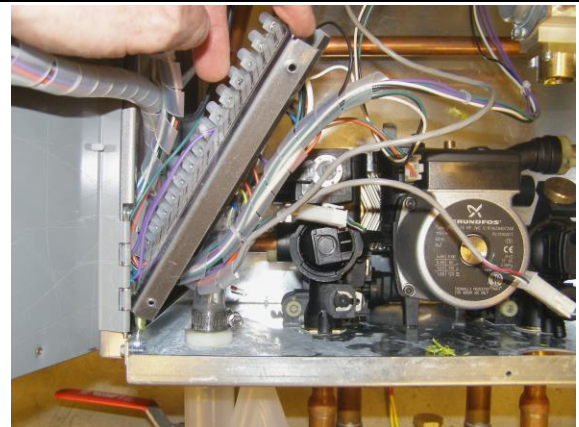
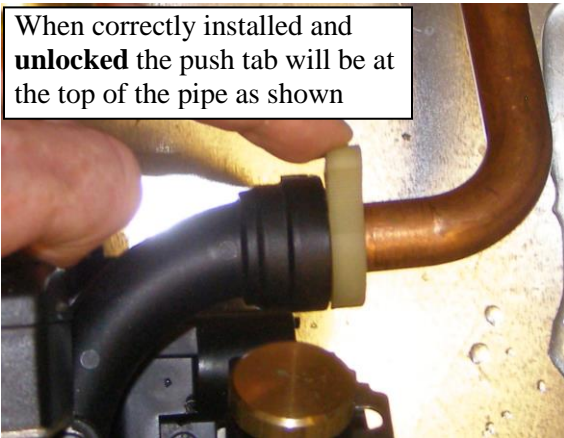


Figure 2: Moving wiring terminal strip



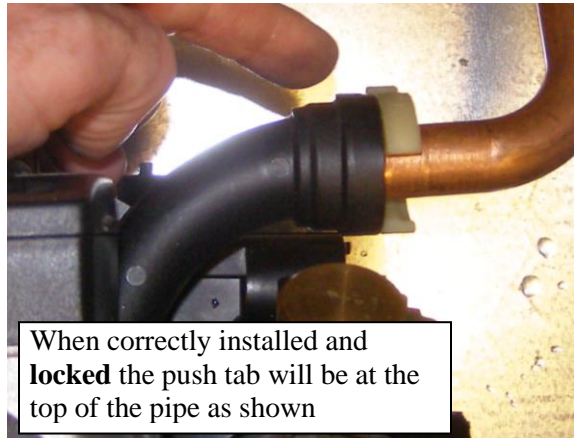
**Figure 3 :** Turn counter clockwise to unlock

When correctly installed and **unlocked** the push tab will be at the top of the pipe as shown



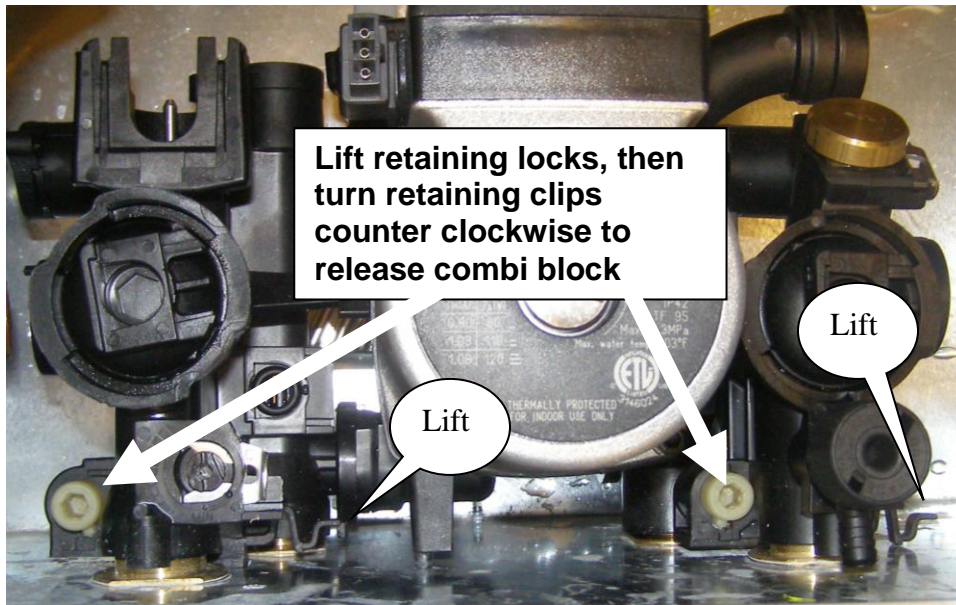
**Figure 4:** Turn clockwise to lock

When correctly installed and **locked** the push tab will be at the top of the pipe as shown



**Figure 5:**Combi block retaining locks and clips

Lift retaining locks, then turn retaining clips counter clockwise to release combi block



**Figure 6: DHW Filling Procedure**

