

**NY Thermal Inc.**  
 Tel: (506) 657-6000  
 Toll Free: 1-800-688-2575  
 Fax: 1-506-432-1135  
 Web: www.nythermal.com  
 Email: info@nythermal.com

## 83291-3 Matrix Flue Adapter Assembly Kit

### Applicable Boiler Models

- M100
- M100V  
 (manufactured after Dec. 9, 2009)

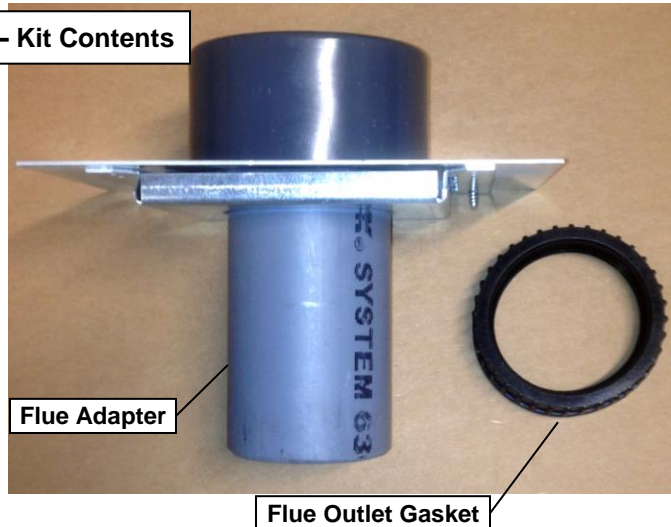
### Kit Contents (See Figure 1)

- 83291-3 Matrix Flue Adapter
- 82765 Flue Outlet Gasket

### Tools/ Equipment Required:

- Drill with 1/4" nut driver
- Saw (for cutting plastic vent pipe)
- Vent pipe and vent pipe fittings
- Vent pipe cement
- Measuring Tape

Figure 1 – Kit Contents



### Replacement Instructions:

1. Remove front cover, front top and middle top, see **Figures 2 and 3**.
2. Cover the Matrix controllers with towels to protect them from dripping water, then cut the vent pipe above the Matrix Flue Adapter and remove it from the appliance, see **Figure 4**.
3. Remove the Flue Outlet Gasket and replace it with the one provided in the kit, see **Figure 5**. Make sure the new gasket is properly seated in the top of the flue box collector adapter, see **Figure 6**.
4. Install the new Flue Adapter; ensure it is fully inserted into the Flue Outlet Gasket. Note: the single screw should be towards the back of the Matrix, on the right hand side as illustrated in **Figure 7**.
5. Reinstall the front and middle tops, starting with the rear top, see **Figure 8**.
6. Reinstall venting; make sure to cement all joints with approved vent pipe cement, see **Figure 9**.
7. Allow cement to cure, check all venting connections for proper sealing.



Flue gases contain corrosive and poisonous gases. Failure to properly seal all venting connections can cause appliance malfunctions, property damage, personal injury or even death.

Figure 2 – Removal of Front Top

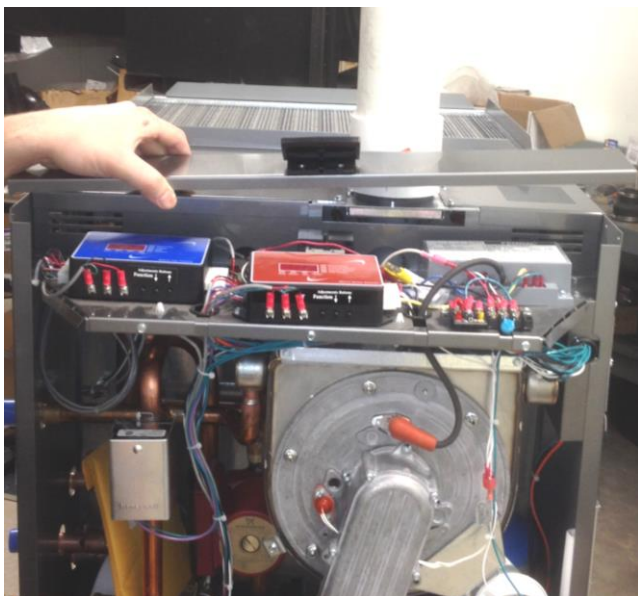
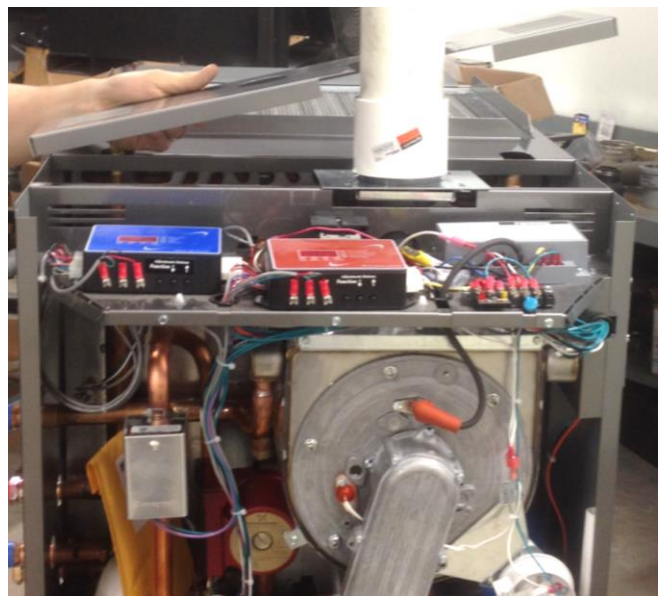
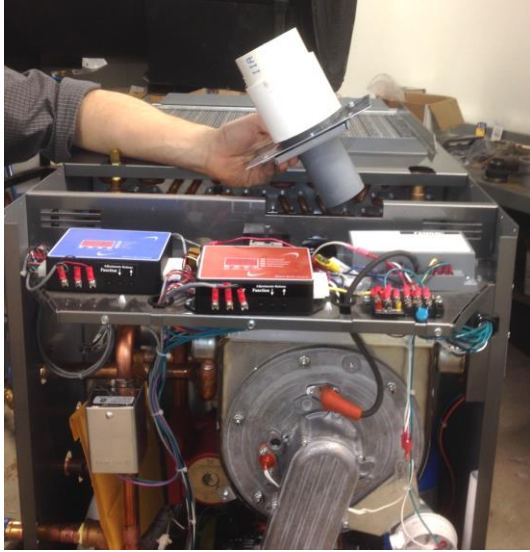


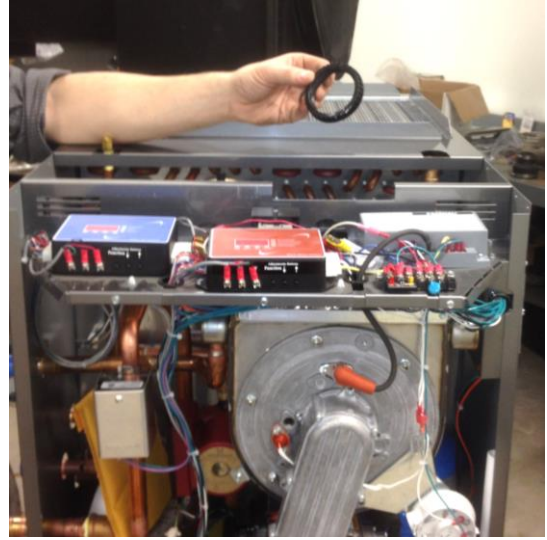
Figure 3 – Removal of Middle Top



**Figure 4 – Removal of Old Flue Adapter**



**Figure 5 – Removal of Old Flue Gasket**



**Figure 6 – Installation of New Flue Gasket**



**Figure 7 – Installation of New Flue Adapter**



**Figure 8 – Reinstallation of Middle Top**



**Figure 9 – Reinstallation of Venting**

